

TECHNICAL MANUAL

ORGANIZATIONAL AND DIRECT
SUPPORT MAINTENANCE
REPAIR PARTS AND SPECIAL TOOLS LIST

AIR CONDITIONER, FLOOR MOUNTED, AIR
COOLED ELECTRIC MOTOR DRIVEN,
3/4 HP, 60 CYCLE
SINGLE PHASE, 9,000 BTU/HR
NSN 4120-01-085-4732

HEADQUARTERS, DEPARTMENT OF THE ARMY
8 OCTOBER 1982

CHANGE
NO. 2

HEADQUARTERS
DEPARTMENT OF THE ARMY
WASHINGTON, D.C., 3 JULY 1992

Organizational and Direct Support Maintenance
Repair Parts and Special Tools List

**AIR CONDITIONER, FLOOR MOUNTED, AIR COOLED
ELECTRIC MOTOR DRIVEN, 3/4 HP, 60 CYCLE
SINGLE PHASE, 9,000 BTU/HR
NSN 4120-01-085-4732**

Approved for public release; Distribution is unlimited

TM 5-4120-341-23P, 8 October 1982 is changed as follows:

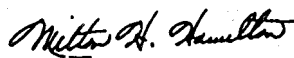
1. Remove and insert pages as indicated below. New or changed text material is indicated by a vertical bar in the margin. An illustration change is indicated by a miniature pointing hand.

Remove pages	Insert pages
9 and 10	9 and 10
21 and 22	21 and 22
27 and 28	27 and 28

2. Retain this sheet in front of manual for reference purposes.

By Order of the Secretary of the Army:

Official:



MILTON H. HAMILTON
*Administrative Assistant to the
Secretary of the Army*

01883

GORDON R. SULLIVAN
*General, United States Army
Chief of Staff*

DISTRIBUTION:

To be distributed in accordance with DA Form 12-25E, (qty rqr block no. 0044).

CHANGE }
NO. 1 }

HEADQUARTERS
DEPARTMENT OF THE ARMY
WASHINGTON, D.C., 6 May 1987

Organizational and Direct
Support Maintenance
Repair Parts and Special Tools List

**AIR CONDITIONER, FLOOR MOUNTED, AIR COOLED
ELECTRIC MOTOR DRIVEN, 3/4 HP, 60 CYCLE
SINGLE PHASE, 9,000 BTU/HR
NSN 4120-01-085-4732**

TM 5-4120-341-23P, 8 October 1982, is changed as follows:

1. Title is changed as shown above.

2. Remove and insert pages as indicated below. New or changed text material is indicated by a vertical bar in the margin. An illustration change is indicated by a miniature pointing hand.

Remove pages

i/ii
17 and 18
27 and 28

Insert pages

i/ii
17 and 18
27 and 28

3. Retain this sheet in front of manual for reference purposes.

By Order of the Secretary of the Army:

JOHN A. WICKHAM, JR.
General, United States Army
Chief of Staff

Official:

R. L. DILWORTH
Brigadier General, United States Army
The Adjutant General

DISTRIBUTION:

To be distributed in accordance with DA Form 12-25A, Unit and Direct Support Maintenance requirements for Air Conditioner, Floor Mounted, 9000 BTU, 3/4 HP, 60HZ, AC, 1PH (HAC-751)

TECHNICAL MANUAL

NO. 5-4120-341-23P

HEADQUARTERS
DEPARTMENT OF THE ARMY
WASHINGTON, D.C., 8 October 1982

ORGANIZATIONAL AND DIRECT
SUPPORT MAINTENANCE
REPAIR PARTS AND SPECIAL TOOLS LIST

AIR CONDITIONER, FLOOR MOUNTED, AIR COOLED
ELECTRIC MOTOR DRIVEN, 3/4 HP, 60 CYCLE
SINGLE PHASE, 9,000 BTU/HR
NSN 4120-01-085-4732

Current as of 3 May 1982

REPORTING ERRORS AND RECOMMENDING IMPROVEMENTS

You can help improve this manual. If you find any mistake or if you know of a way to improve the procedures, please let us know. Mail your letter, DA Form 2028 (Recommended Changes to Publications and Blank Forms), or DA Form 2028-2 located in the back of this manual direct to: Commander, U.S. Army Troop Support Command, ATTN: AMSTR-MCTS, 4300 Goodfellow Boulevard, St. Louis, MO 63120-1798. A reply will be furnished directly to you.

TABLE OF CONTENTS

	Page	Illus Figure
Section I. Introduction	1	
II. Repair parts list	1	
Group 01. Housing	7	
Panels and covers	7	1
Grills and front panel	9	2
02. Filter	11	3
03. Electric motor and fans	13	
Fans	13	4
Fan motor	15	5
04. Starting and protective devices	17	6
05. Wiring	17	7
06. Gas compressor, piping and components	21	8
07. Bulk Items	26	
Section III. Not applicable		
Section IV. National stock number and part number index	27	

ORGANIZATIONAL AND DIRECT SUPPORT MAINTENANCE REPAIR PARTS AND SPECIAL TOOLS LIST

Section I. INTRODUCTION

1. Scope. This manual lists spares and repair parts; special test, measurement, and diagnostic equipment (TMDE), and other special support equipment required for performance of organizational, direct support, and general support maintenance of the air conditioner.

2. General. This Repair Parts and Special Tools List is divided into the following sections:

a. Section II. Repair Parts List. A list of spares and repair parts authorized for use in the performance of maintenance. The list also includes parts which must be removed for replacement of the authorized parts. Parts lists are composed of functional groups in numeric sequence, with the parts in each group listed in figure and item number sequence. Bulk materials are listed in NSN sequence.

b. Section III. Special Tools List. Not applicable.

c. Section IV. National Stock Number and Part Number Index. A list, in National item identification number (NIIN) sequence, of all National stock numbers (NSN) appearing in the listings, followed by a list in alphanumeric sequence, of all part numbers appearing in the listings. National stock numbers and part numbers are cross-referenced to each illustration figure and item number appearance. This index is followed by a cross-reference list of reference designators to figure and item numbers.

3. Explanation of Columns.

a. Illustration. This column is divided as follows:

(1) Figure Number. Indicates the figure number of the illustration on which the item is shown.

(2) Item Number. The number used to identify item called out in the illustration.

b. Source, Maintenance and Recoverability (SMR) Codes.

(1) Source Code. Source codes indicate the manner of acquiring support items for maintenance, repair or overhaul of end items. Source codes are entered in the first and second positions of the Uniform SMR Code format as follows:

Code	Definition
PA	Item procured and stocked for anticipated or known usage.
PB	Item procured and stocked for insurance purposes because essentiality dictates that a minimum quantity be available in the supply system.
PC	Item procured and stocked and which otherwise would be coded PA except that it is deteriorative in nature.
PD	Support item, excluding support equipment, procured for initial issue or outfitting and stocked only for subsequent or additional initial issues or outfitting. Not subject to automatic replenishment.
PE	Support equipment procured and stocked for initial issue or outfitting to specified maintenance repair activities.
PF	Support equipment which will not be stocked but which will be centrally procured on demand.
PG	Item procured and stocked to provide for sustained support for the life of the equipment. It is applied to an item peculiar to the equipment which, because of probable discontinuance or shutdown of production facilities, would prove uneconomical to reproduce at a later time.
KD	An item of a depot overhaul/repair kit and not purchased separately. Depot kit defined as a kit that provides items required at the time of overhaul or repair.

- KF An item of a maintenance kit and not purchased separately. Maintenance kit defined as a kit that provides an item that can be replaced at organizational or intermediate levels of maintenance.
- KB Item included in both a depot overhaul/repair kit and a maintenance kit.
- MO Item to be manufactured or fabricated at the organizational level.
- MF Item to be manufactured or fabricated at the direct support maintenance level.
- MH Item to be manufactured or fabricated at the general support maintenance level.
- MD Item to be manufactured or fabricated at the depot maintenance level.
- AO Item to be assembled at organizational level.
- AF Item to be assembled at the direct support maintenance level.
- AH Item to be assembled at general support maintenance level.
- AD Item to be assembled at depot maintenance level.
- XA Item is not procured or stocked because the requirements for the item will result in the replacement of the next higher assembly.
- XB Item is not procured or stocked. If not available through salvage, requisition.
- XC Installation drawing, diagram, instruction sheet, field service drawing, that is identified by manufacturer's part number.
- XD A support item that is not stocked. When required, item will be procured through normal supply channels.

NOTE

Cannibalization or salvage maybe used as a source of supply for any items coded above except those coded XA and aircraft support items as restricted by AR 700-42.

(2) Maintenance Code. Maintenance codes are assigned to indicate the levels of maintenance authorized to USE and REPAIR support items. The maintenance codes are entered in the third and fourth positions of the Uniform SMR Code format as follows:

(a) The maintenance code entered in the third position will indicate the lowest maintenance level authorized to remove, replace and use the support item. The maintenance code entered in the third position will indicate one of the following levels of maintenance:

Code	Application/Explanation
C	Crew or operator maintenance performed within organizational maintenance.
O	Support item is removed, replaced, used at the organizational level.
F	Support item is removed, replaced, used at the direct support level.
H	Support item is removed, replaced, used at the general support level.
D	Support items that are removed, replaced, used at depot, mobil depot, or specialized repair activity only.

(b) The maintenance code entered in the fourth position indicates whether the item is to be repaired and identifies the lowest maintenance level with the capability to perform complete repair (i.e., all authorized maintenance functions). This position will contain one of the following maintenance codes:

Code	Application/Explanation
O	The lowest maintenance level capable of complete repair of the support item is the organizational level.
F	The lowest maintenance level capable of complete repair of the support item is the direct support level.
H	The lowest maintenance level capable of complete repair of the support item is the general support level.
D	The lowest maintenance level capable of complete repair of the support item is the depot level.
L	Repair restricted to designated specialized repair activity.
Z	Nonreparable. No repair is authorized.
B	No repair is authorized. The item maybe reconditioned by adjusting, lubricating, etc., at the user level. No parts or special tools are procured for the maintenance of this item.

(3) Recoverability Code. Recoverability codes are assigned to support items to indicate the disposition action on unserviceable items. The recoverability code is entered in the fifth position of the Uniform SMR Code format as follows:

Recoverability Code	Definition
Z	Nonreparable item. When unserviceable, condemn and dispose at the level indicated in position 3.
O	Reparable item. When uneconomically repairable, condemn and dispose at organizational level.
F	Reparable item. When uneconomically repairable, condemn and dispose at the direct support level.
H	Reparable item. When uneconomically repairable, condemn and dispose at the general support level.
D	Reparable item. When beyond lower level repair capability, return to depot. Condemnation and disposal not authorized below depot level.
L	Reparable item. Repair, condemnation, and disposal not authorized below depot/specialized repair activity level.
A	Item requires special handling or condemnation procedures because of specific reasons (i.e., precious metal content, high dollar value, critical material or hazardous material). Refer to appropriate manuals/directives for specific instructions.

c. National Stock Number. Indicates the National stock number assigned to the item and will be used for requisitioning.

d. Part Number. Indicates the primary number used by the manufacturer (individual, company, firm corporation, or Government activity), which controls the design and characteristics of the item by means of its engineering drawings, specifications, standards and inspection requirements to identify an item or range of items.

NOTE

When a stock numbered item is requisitioned, the item received may have a different part number than the part being replaced.

e. Federal Supply Code for Manufacturer (FSCM). The FSCM is a 5-digit numeric code listed in SB 708-42 which is used to identify the manufacturer, distributor, or Government agency, etc.

f. Description. Indicates the Federal item name and, if required, a minimum description to identify the item. The physical security classification of the item is indicated by the parenthetical entry (insert applicable physical security classification abbreviation, e.g., Phy Sec C1(C)-Confidential, Phy Sec C1(S)-Secret, Phy Sec C1(T)-Top Secret). Items that are included in kits and sets are listed below the name of the kit or set with the quantity of each item in the kit or set indicated in the quantity incorporated in unit column. When the part to be used differs between serial numbers of the same model, the effective serial numbers are shown as the last line of the description. In the Special Tools List, the initial basis of issue (BOI) appears as the last line in the entry for each special tool, special TMDE, and other special support equipment. When density of equipments supported exceeds density spread indicated in the basis of issue, the total authorization is increased accordingly.

g. Unit of Measure (U/M). Indicates the standard of the basic quantity of the listed item as used in performing the actual maintenance function. This measure is expressed by a two-character alphabetical abbreviation (e.g., ea, in., pr, etc.). When the unit of measure differs from the unit of issue, the lowest unit of issue that will satisfy the required units of measure will be requisitioned.

h. Quantity Incorporated in Unit Indicates the quantity of the item used in the breakout shown on the illustration figure, which is prepared for a functional group, subfunctional group, or an assembly. A "V" appearing in this column in lieu of a quantity indicates that no specific quantity is applicable (e.g., shims, spacers, etc.).

4. Special Information.

a. Detailed manufacturing instructions for items source coded to be manufactured or fabricated are found in TM 5-4110-234-14. Bulk materials required to manufacture items are listed in the Bulk Material Group of this manual.

b. Detailed assembly instructions for items source coded to be assembled are found in TM 5-4120-341-13. Assembly components are listed immediately following the item to be assembled.

c. Repair parts kits and gasket sets appear as the last entries in the repair parts listing for the figure in which its parts are listed as repair parts or are listed at the end of the repair parts listing for the last figure containing parts of the kit.

d. The following publications pertain to the air conditioner and its components: TM 5-4120-341-13.

5. How to Locate Repair Parts.

a. When National Stock Number or Part Number is Unknown:

(1) First. Using the table of contents, determine the functional group within which the item belongs. This is necessary since illustrations are prepared for functional groups and listings are divided into the same groups.

(2) Second. Find the illustration covering the functional group to which the item belongs.

(3) Third. Identify the item on the illustration and note the illustration figure and item number of the item.

(4) Fourth. Using the Repair Parts Listing, find the figure and item number noted on the illustration.

b. When National Stock Number or Part Number is Known.

(1) First. Using the Index of National Stock Numbers and Part Numbers, find the pertinent National stock number or part number. This index is in NIIN sequence followed by a list of part numbers in alphanumeric sequence, cross-referenced to the illustration figure number and item.

(2) Second. After finding the figure and item number, locate the figure and item number in the repair parts list.

6. Abbreviations.

Plate	Pl
Damper	Dmpr
Centrifical	Centri
Electric	Elec
Thick	Thk
Assembly	Assy

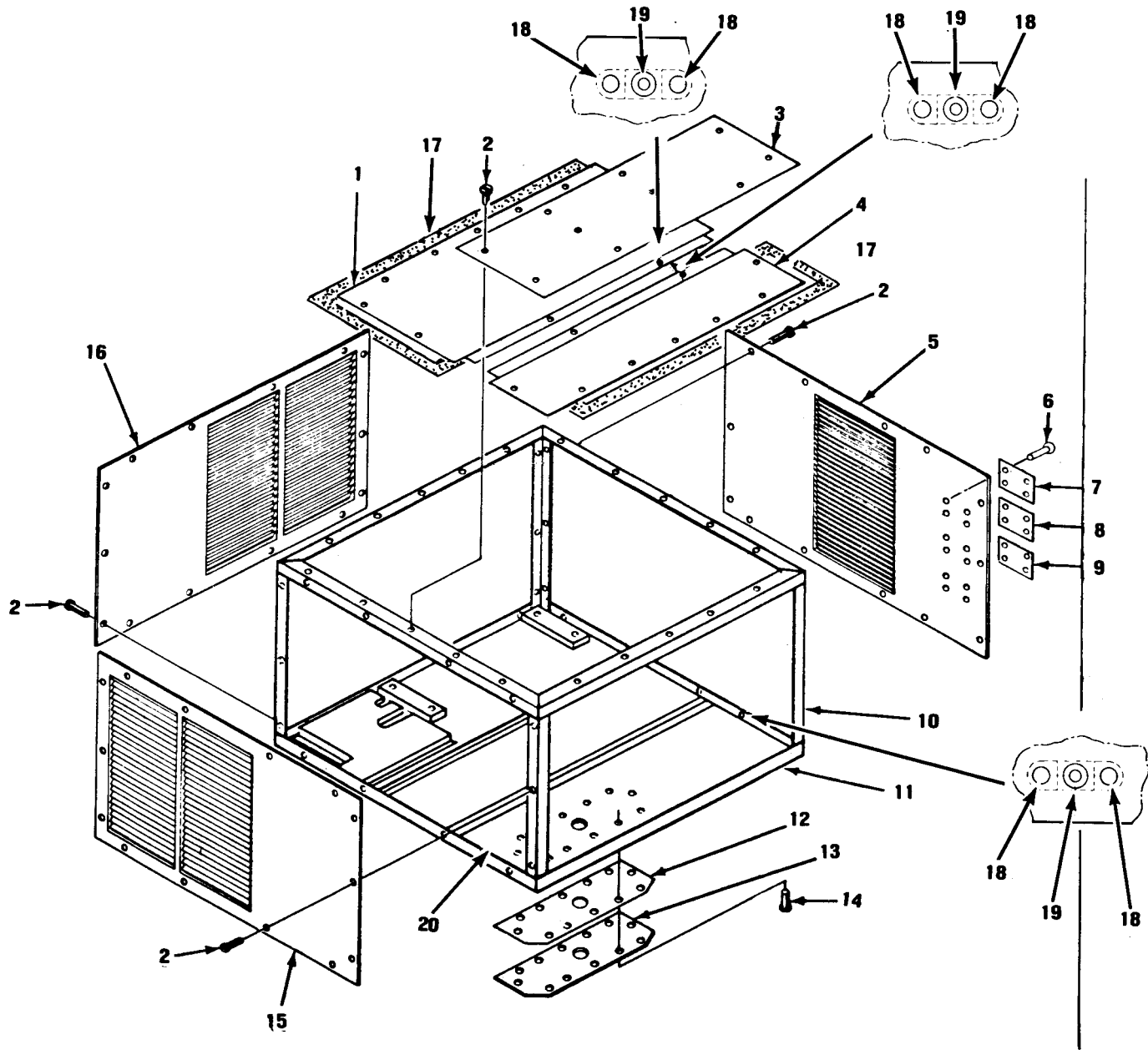


Figure 1. Panels and Covers

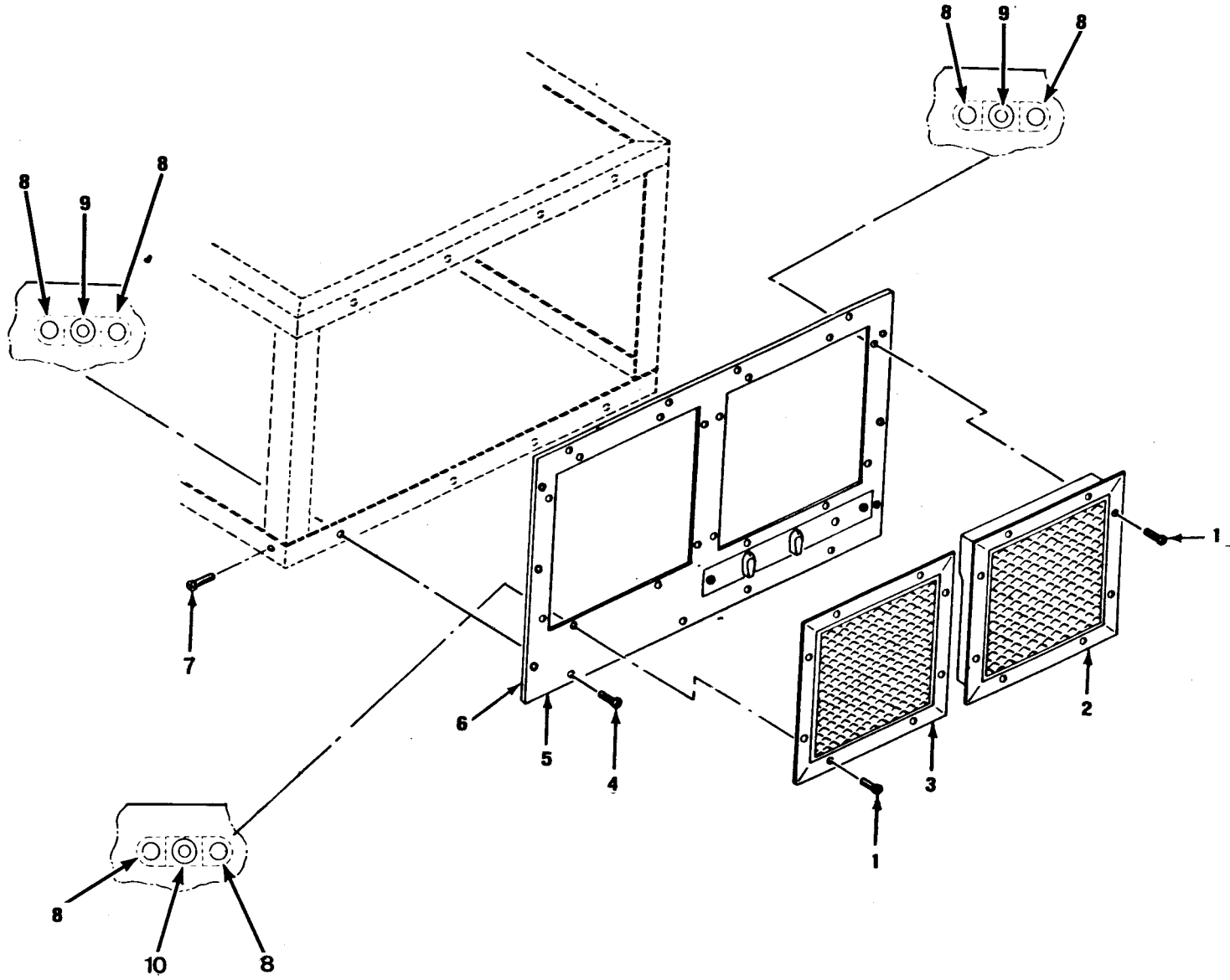


Figure 2. Grills and Front Panel

TMS-4120-341-23P			CHANGE 2						
(1)	(2)	(3)	(4)	(5)	(6)	(7)	(8)	(9)	
ILLUSTRATION			NATIONAL		DESCRIPTION			SECTION	
(a)	(b)	SMR	STOCK	FSCM	PART	USABLE ON CODE	U/M	QTY	
FIG	ITEM	CODE	NUMBER		NUMBER		USABLE ON CODE	INC	
NO	NO							IN	
								UNIT	
2	1	PAOZZ	5305-00-054-6672	96906	MS51957-47		EA	16	
2	2	PBOZZ	5340-01-312-6110	97403	13221E4578		EA	1	
2	3	XBOZZ		97403	13221E4577		EA	1	
2	4	PAOZZ	5305-00-054-6670	96906	MS51957-45		EA	14	
2	5	XBOZZ		97403	13221E4576		EA	1	
2	6	PAOZZ		81349	MIL-G-20241		EA	5	
2	7	PAOZZ	5305-00-054-6652	96906	MS51957-28		EA	2	
2	8	PAOZZ	5320-00-838-7852	96906	MS20605B3W2		EA	36	
2	9	PAOZZ	5310-00-728-3469	96906	MS21077-08		EA	16	
2	10	PAOZZ	5310-00-726-9076	96906	MS21077-06		EA	2	

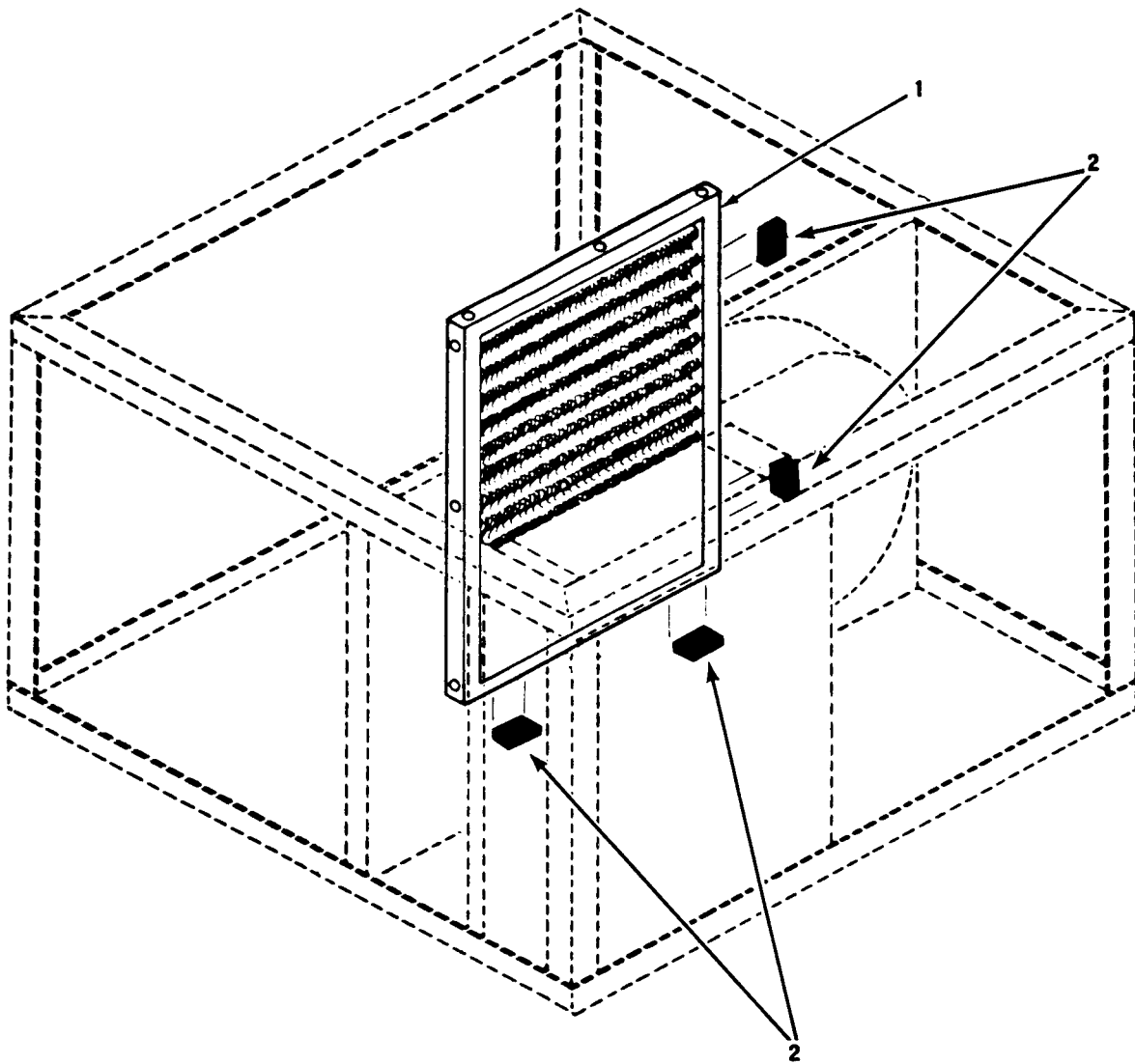


Figure 3. Air Filter

(1)		(2)		(3)		(5)		(7)		SECTION
ILLUSTRATION						DESCRIPTION				QTY
(a)	(b)	NATIONAL								INC
FIG	ITEM	SMR	STOCK	FSCM	PART					IN
NO	NO	CODE	NUMBER		NUMBER	USABLE ON CODE		U/M		UNIT
								USABLE ON CODE		
GROUP 02 FILTER										
3	1	PAOZZ	4130-01-071-5466	97403	13221E4533	FILTER,AIR CONDITION		EA		1
3	2	PAOZZ	9320-01-020-3543	81348	ASTM D2000	RUBBER SHEET,SOLID		SH		4

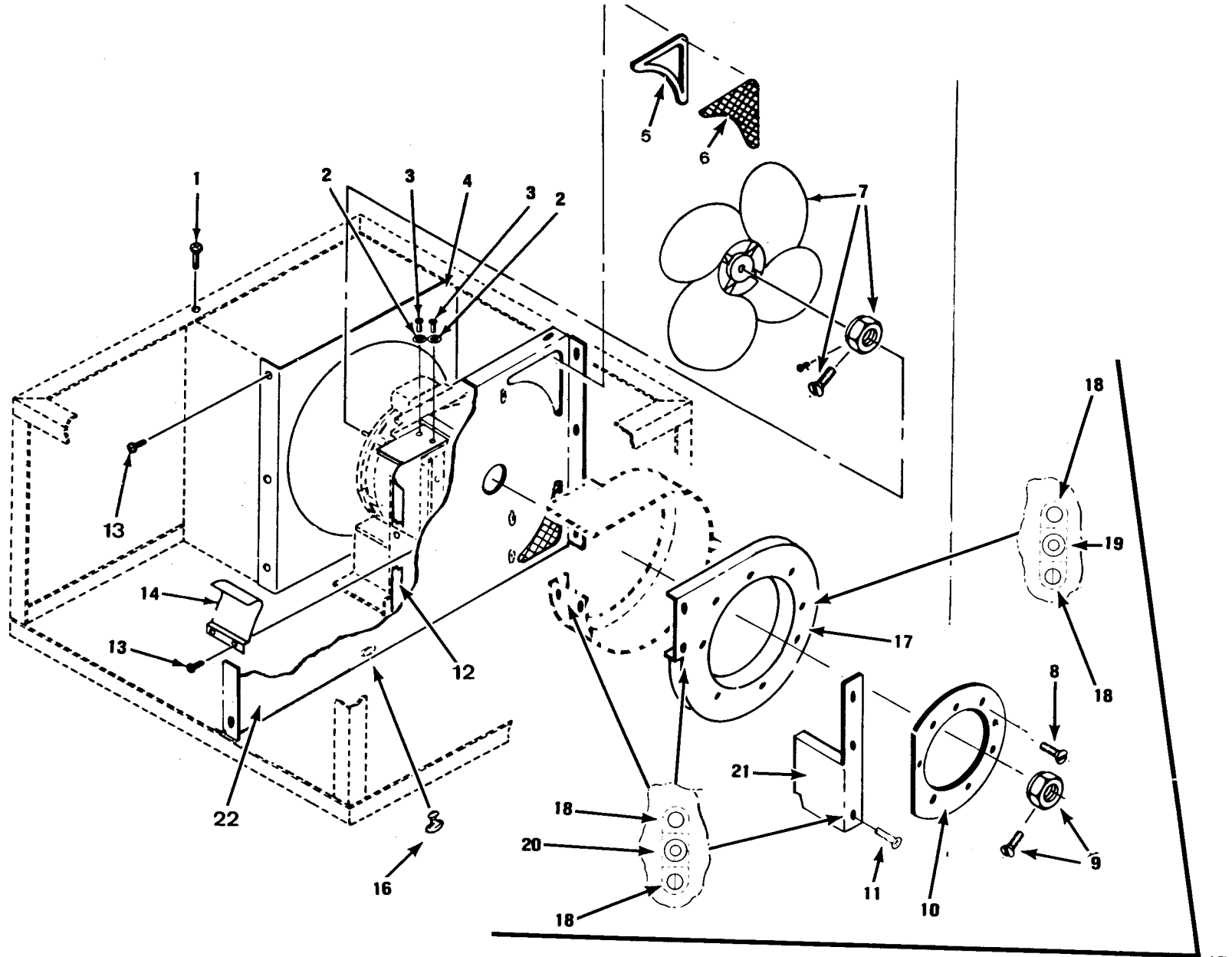


Figure 4. Fans

(1)	(2)	(3)	(5)	(7)	SECTION	
ILLUSTRATION					QTY	
(a)	(b)	NATIONAL			INC	
FIG	ITEM	STOCK			IN	
NO	NO	NUMBER	FSCM	PART NUMBER	DESCRIPTION	UNIT
					USABLE ON CODE	
					U/M	
					USABLE ON CODE	
GROUP 03 ELECTRIC MOTOR AND FANS						
4	1	PAOZZ 5305-00-984-7341	96906	MS35191-273	SCREW,MACHINE	EA 11
4	2	PAOZZ 5310-00-765-3197	96906	MS27183-41	WASHER,FLAT	EA 2
4	3	PAOZZ 5305-00-054-6669	96906	MS51957-44	SCREW,MACHINE	EA 18
4	4	XBFZZ	97403	13221E4545	SHROUD,CONDENSER	EA 1
4	5	XBOZZ	97403	13221E4555	RETAINER,SCREEN	EA 1
4	6	XBOZZ	81348	RR-W-365TYPE1120 X20.7WX14.621	WIRE,FABRIC	EA 1
4	7	PAOZZ 4140-01-066-9502	97403	13221E4575	IMPELLER,FAN,AXLE	EA 1
4	8	PAOZZ 5305-00-054-6651	96906	MS51957-27	SCREW,MACHINE	EA 15
4	9	PAOZZ 4140-01-066-9503	97403	13211E4553	IMPELLER,FAN,CENTRI	EA 1
4	10	XBOZZ	97403	13221E4547	INTAKE RING BLOWER	EA 1
4	11	PAOZZ 5305-00-054-6669	96906	MS51957-44	SCREW,MACHINE	EA 4
4	12	XBOZZ	97403	13222E5746	DEFLECTOR,AIR	EA 1
4	13	PAOZZ 5305-00-054-6653	96906	MS51957-29	SCREW,MACHINE	EA 2
4	14	XBOZZ	97403	13221E4564	CUTOFF,BLOWER HOUSING	EA 1
4	15	XBFZZ	97403	13221E4550	BULKHEAD ASSEMBLY	EA 1
4	16	PAFZZ 5320-02-049-9232	96906	MS24662-203	RIVET,BLIND	EA 4
4	17	XBFZZ	97403	13221E4560	PLATE,BLOWER HOUSING	EA 1
4	18	PAFZZ 5320-00-825-1927	96906	MS20605B3W4	RIVET,BLIND	EA 18
4	19	PAFZZ 5310-00-771-7396	96906	MS21076-L06	NUT,SELFLOCKING	EA 7
4	20	PAFZZ 5310-00-771-7361	96906	MS21076L08	NUT,SELFLOCKING	EA 2
4	21	KBFZZ	97403	13221E4561	SHROUD,BLOWER	EA 1
4	22	XAFZZ	97403	13221E4546	BULKHEAD	EA 1

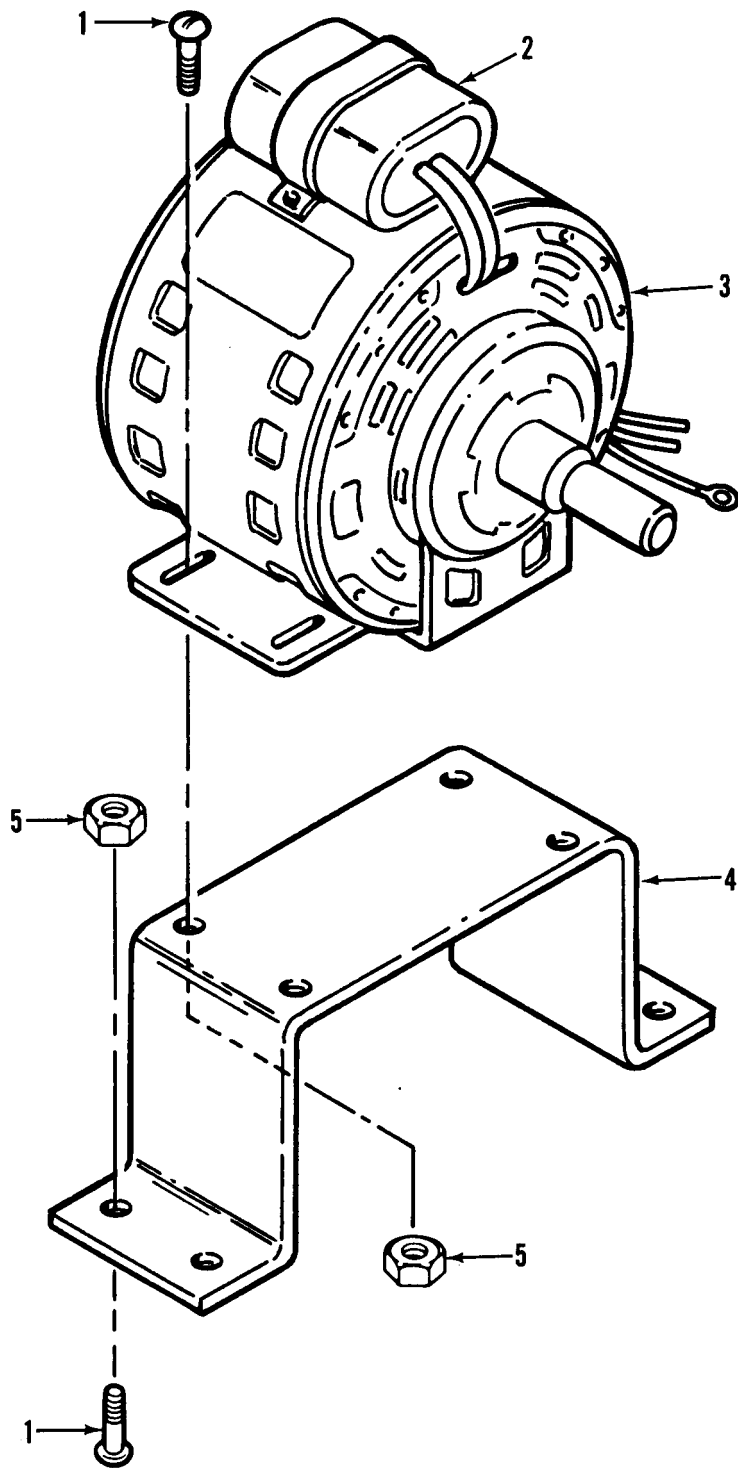


Figure 5. Fan Motor

(1)	(2)	(3)	(5)	(7)	SECTION				
ILLUSTRATION			DESCRIPTION		QTY				
(a)	(b)	NATIONAL			INC				
FIG	ITEM	STOCK			IN				
NO	NO	NUMBER	FSCM	PART	UNIT				
				NUMBER					
				USABLE ON CODE					
				U/M					
				USABLE ON CODE					
5	1	XDOZZ	5305-00-267-8973	96906	MS90726-4	SCREW,CAP,HEXAGON		EA	
5	2	PAOZZ		90201	OPN370	CAPACITOR, FIXED		EA	4
5	3	PAOZZ	6105-01-072-5722	97403	13221E4583	MOTOR, ALTERNATING		EA	1
5	4	XBOZZ		97403	13221E4539	BRACKET, MOTOR		EA	1
5	5	PAOZZ	5310-00-982-4988	96906	MS21045C4	NUT, SLEF LOCKING		EA	8

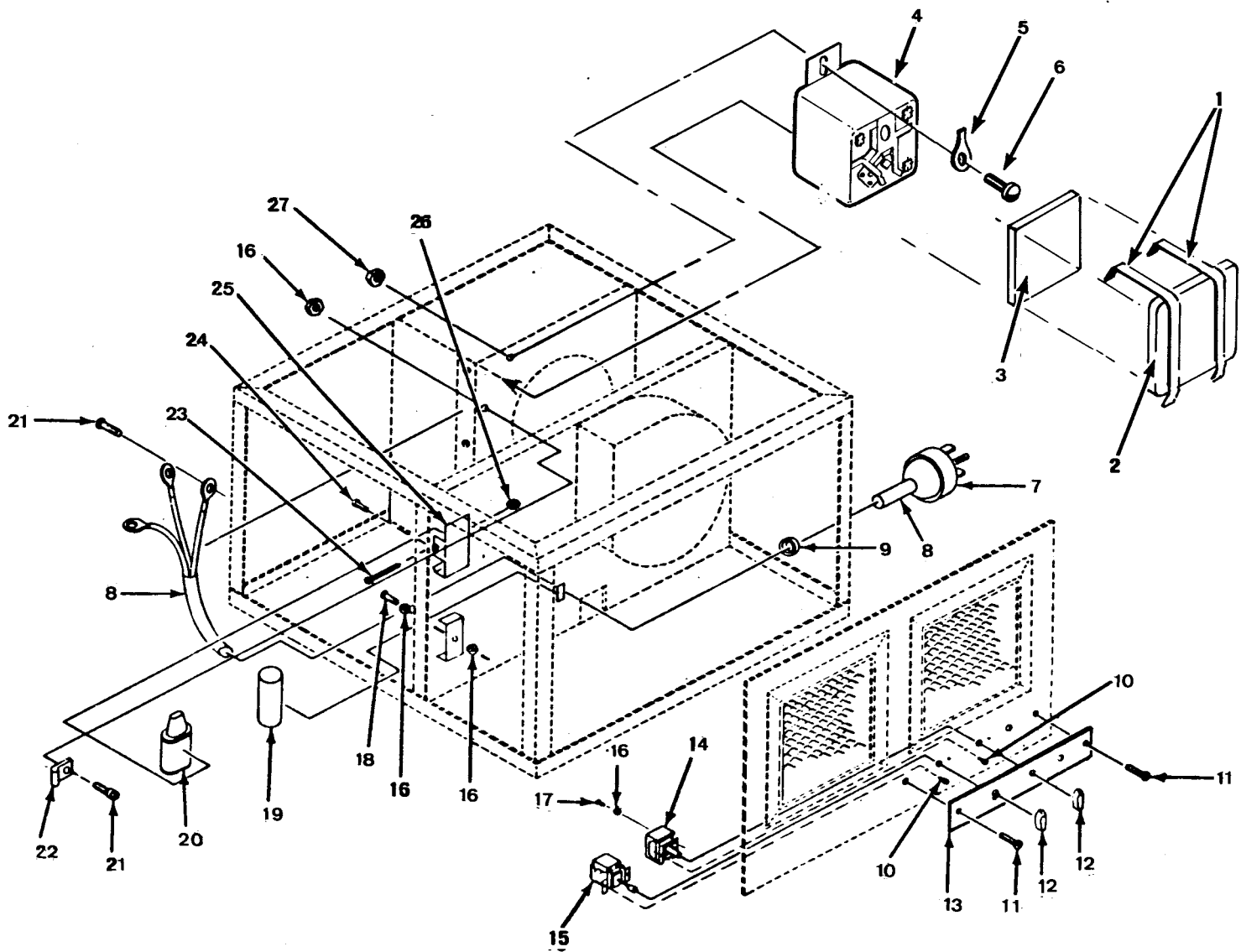
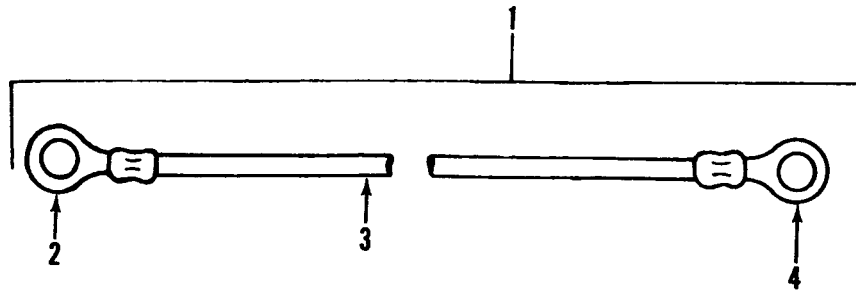


Figure 6. Starting and Protective Devices

TMS-4120-341-23P		CHANGE 1									
(1)	(2)	(3)	(4)	(5)	(6)	(7)	(8)	(9)	(10)	(11)	(12)
ILLUSTRATION			NATIONAL		DESCRIPTION						SECTION
(a)	(b)		STOCK								QTY
FIG	ITEM	SMR	NUMBER	FSCM	PART	USABLE ON CODE	U/M	USABLE ON CODE			INC
NO	NO	CODE	NUMBER		NUMBER						IN
											UNIT
GROUP 04 START AND PROTECTIVE DEVICE											
6	1	PAOZZ	5975-00-451-5001	96906	MS3367-3-9	STRAP, TIEDOWN, ELECT	EA				2
6	2	XBOZZ		97403	13220E8465	COVER, PROTECTIVE	EA				1
6	3	PAOZZ	5330-01-020-3543	81346	ASTM-D2000	NEOPREME	SH				1
6	4	PAOZZ	5945-01-097-1751	97403	13221E4582	RELAY, ELECTROMAGNET	EA				1
6	5	PAOZZ	5940-00-143-4774	96906	MS25036-153	TERMINAL, LUG	EA				5
6	6	PAOZZ	5305-00-939-0795	96906	MS35218-26	SCREW, MACHINE	EA				1
6	7	PAOZZ	5935-01-023-9777	81348	W-C-596/13-2	CONNECTOR, PLUG, ELEC	EA				1
6	8	PAOZZ	6145-00-997-7051	81349	MILC3432, 1/HR	CABLE, POWER ELEC	FT				1
6	9	PAOZZ	5975-00-273-0788	28520	SR6P1	BUSHING, STRAIN	EA				1
6	10	PAOZZ	5305-00-958-5474	96906	MS35190-250	SCREW, MACHINE	EA				5
	11	PAOZZ	5305-00-054-6652	96906	MS51957-28	SCREW, MACHINE	EA				4
6	12	PAOZZ	5355-00-842-3111	96906	MS91528-1A2B	KNOB, CONTROL	EA				2
6	13	XBOZZ		97403	13221E4567	PLATE, CONTROL PANEL	EA				1
	14	PAOZZ	5930-00-338-8587	97403	13221E4549	SWITCH, SELECTOR	EA				1
	15	PAOZZ	5930-00-617-3585	97403	13221E4554	SWITCH THERMOSTATIC	EA				1
6	16	PAOZZ	5310-00-939-0850	96906	MS21083C08	NUT, SELF-LOCKING	EA				3
6	17	PAOZZ	5305-00-546-6650	96906	MS51927-28	SCREW, MACHINE	EA				4
6	18	PAOZZ	5305-00-054-6672	96906	MS51957-47	SCREW, MACHINE	EA				2
6	19	PAFZZ	5910-00-463-3149	09023	ETW460-125	CAPACITOR, FXD START	EA				1
6	20	PAOZZ	5910-01-073-5744	01002	21L3007	CAPACITOR, FIXED	EA				1
6	21	PAOZZ	5305-00-054-6668	96906	MS51957-43	SCREW, MACHINE	EA				3
6	22	PAOZZ	5340-00-726-9316	96906	MS21919D8	CLAMP, LOOP	EA				1
6	23	PAOZZ	5305-00-841-7424	96906	MS51957-55	SCREW, MACHINE	EA				1
6	24	PAOZZ	5305-00-054-6670	96906	MS51957-45	SCREW, MACHINE	EA				1
6	25	XBOZZ		97403	13222E5747	BRACKET, CAPACITOR	EA				1
6	26	PAOZZ	5310-00-982-6814	96906	MS21044C08	NUT, SELF LOCKING	EA				1
6	27	PAOZZ	5310-00-925-9646	96906	MS21083C06	NUT, SELF-LOCKING	EA				1



ELECTRICAL LEAD PART NUMBER (ITEM NO. 1)	TERMINAL LUG PART NUMBER (ITEM NO. 2)	WIRE MARKING	TERMINAL LUG PART NUMBER (ITEM NO. 3)	WIRE PART NUMBER (ITEM NO.4)
13221E4585-1	MS25036-156	K1-2 B1-START	61108-1	M5086/1-12-9
13221E4585-2	MS25036-156	K1-5 B1-COMMON	61108-1	M5086/1-12-9
13221E4585-3	MS25036-156	K1-1 C1	MS25036-111	M5086/1-12-9
13221E4585-4	MS25036-156	K1-4 C1	MS25036-111	M5086/1-12-9
13221E4585-5	MS25036-153	K1-4 S1-L1	MS25036-107	M5086/1-14-9
13221E4585-6	MS25036-153	S1-2 S2-1	MS25036-107	M5086/1-14-9
13221E4585-7	MS25036-156	S2-2 B1-RUN	61108-1	M5086/1-12-9
13221E4585-8	MS25036-156	K1-2 C2	61108-1	M5086/1-12-9
13221E4585-9	MS25036-156	C2 S2-2	61108-1	M5086/1-12-9

Figure 7. Wiring

(1)	(2)	(3)	(5)	(7)	SECTION			
ILLUSTRATION			DESCRIPTION		QTY			
(a)	(b)	NATIONAL			INC			
FIG	ITEM	STOCK			IN			
NO	NO	NUMBER	FSCM	PART	UNIT			
				NUMBER				
				USABLE ON CODE				
				U/M				
				USABLE ON CODE				
				GROUP 05 WIRING				
7	1	MOOOZ	97403	13221E4585-1	LEAD, ELECTRICAL	EA	7	
7	2	PAOZZ	5940-00-143-4775	96906	MS25036-156	TERMINAL, LUG	EA	9
7	3	PAOZZ		00779	61108-1	TERMINAL, LUG	EA	9
7	4	PAOZZ	6145-00-578-7521	83149	MS086/1-12-9	WIRE, ELECTRICAL	FT	28

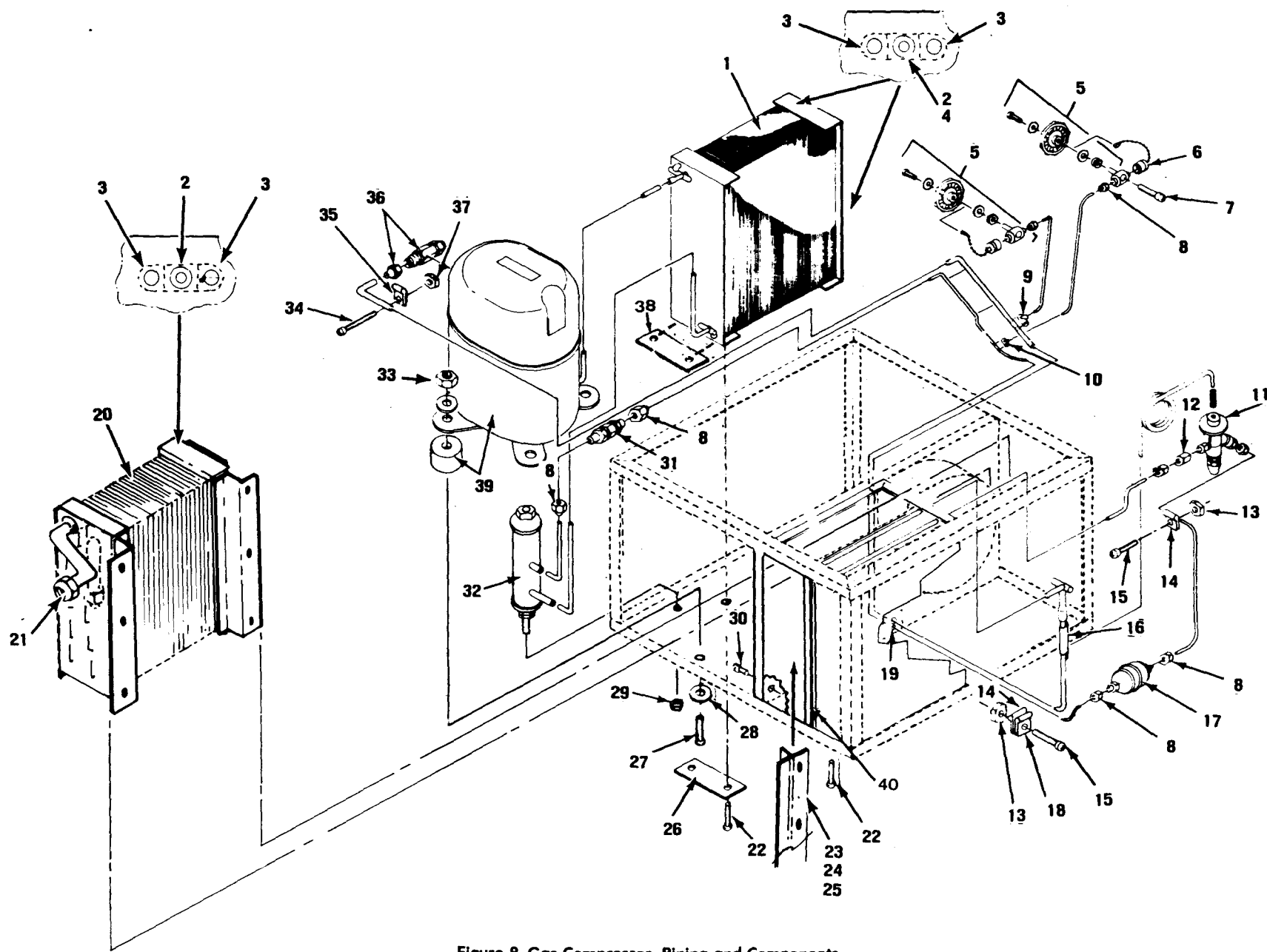


Figure 8. Gas Compressor, Piping and Components

(1) ILLUSTRATION (a) FIG NO	(2) (b) ITEM NO	(3) SMR CODE	(4) NATIONAL STOCK NUMBER	(5) FSCM	(6) PART NUMBER	DESCRIPTION USABLE ON CODE	(7) U/M USABLE ON CODE	SECTION QTY INC IN UNIT
GROUP 06 GAS COMPRESSOR, PIPING AND								
COMPONENTS								
8	1	PBFZZ		97403	13221E4534	COIL, CONDENSER	EA	1
8	2	PAOZZ	5310-00-728-5502	96906	MS21077-3	NUT, SELF-LOCKING, PL	EA	10
8	3	PAFZZ	5320-00-838-7852	96906	MS20605B3W2	RIVET, BLIND	EA	34
8	4	PAFZZ	5310-00-728-3469	96906	MS21077-08	NUT, SELF-LOCKING, PL	EA	9
8	5	PAFZZ	4820-01-015-6690	97403	13219E9499	VALVE, GLOBE	EA	1
8	6	PAFZZ	4730-01-092-3835	97403	13219E9540	CAP AND CHAIN	EA	2
8	7	PAFZZ	5305-00-054-6651	96906	MS51957-27	SCREW, MACHINE	EA	4
8	8	PAFZZ	4730-00-189-2737	96909	MS35872-2	NUT, TUBE COUPLING	EA	10
8	9	PAFZZ	4730-00-821-9184	41947	W40350	TEE, TUBE	EA	1
8	10	PAFZZ	4730-00-257-2163	96906	MS35929-2	TEE, TUBE	EA	1
8	11	PAFZZ	4820-00-472-2641	97403	13221E4574	VALVE, EXPANSION	EA	1
8	12	XBFZZ		81343	SAE-J516	ADAPTER, REDUCER	EA	1
8	13	PAOZZ	5310-00-939-0850	96906	MS21083C08	NUT, SELF-LOCKING	EA	3
8	14	PAOZZ	5340-00-291-5323	96906	MS21919WCG4	CLAMP, LOOP	EA	3
8	15	PAOZZ	5305-00-054-6668	96906	MS51957-43	SCREW, MACHINE	EA	2
8	16	PAFZZ	5640-00-580-6276	77464	165	TAPE, INSULATION	EA	1900
8	17	PAFZZ	4130-00-081-5399	70255	ADK052	DEHYDRATOR, DESICCANT	EA	1
8	18	PAFZZ	5340-00-726-9316	96906	MS21919D8	CLAMP, LOOP	EA	REF
8	19	PAOZZ	5325-00-960-2410	96906	MS21266-1N	GROMMET, NONMETALLIC	EA	1
8	20	PBFZZ	5950-01-080-1590	97403	13221E4535	COIL EVAPORATOR	EA	1
8	21	PAFZZ	4730-00-189-2739	96906	MS35872-3	NUT, TUBE COUPLING	EA	1
8	22	PAOZZ	5305-00-984-7351	96906	MS35191-275	SCREW, MACHINE	EA	8
8	23	KBFZZ		97403	13221E4544	BAFFLE	EA	1
8	24	PAOZZ	5320-00-838-7852	96906	MS20605B3W2	RIVET, BLIND	EA	12
8	25	PAOZZ	5310-00-728-3469	96906	MS21077-08	NUT, SELF-LOCKING, PL	EA	6
8	26	XBOZZ		97403	13221E4543	SPACER, CONDENSER	EA	2
8	27	PAFZZ	5305-00-269-2809	96906	MS90726-66	SCREW, CAP, HEXAGON	EA	4
8	28	PAFZZ	5310-00-080-6004	96906	MS27183-14	WASHER, FLAT	EA	8
8	29	PAFZZ	5310-00-241-6640	96906	MS16228-6C	NUT, SELF LOCKING	EA	1
8	30	PAOZZ	5305-00-054-6669	96909	MS51957-44	SCREW, MACHINE	EA	REF
8	31	PAFZZ	6685-00-758-5244	41947	A15966	INDICATOR, L-M	EA	1
8	32	XBFZZ		97403	13221E4538	RECEIVER, LIQ REFRIGERANT	EA	1
8	33	PAFZZ	5310-00-059-9264	96906	MS21045C6	NUT, SELF LOCKING	EA	4
8	34	PAOZZ	5305-00-984-7341	96906	MS35191-273	SCREW, MACHINE	EA	1
8	35	PAOZZ	5340-01-024-6617	96906	MS21919D12	CLAMP, LOOP	EA	1
8	36	PFZZ	4730-00-289-0365	81343	SAE-J513	NUT, FLARE REDUCING	EA	3

TMS-4120-341-23P			CHANGE 2						
(1)	(2)	(3)	(4)	(5)	(6)	(7)	(8)	(9)	
ILLUSTRATION			NATIONAL		DESCRIPTION		SECTION		
(a)	(b)	SMR	STOCK	PART		U/M	QTY		
FIG	ITEM	CODE	NUMBER	NUMBER	USABLE ON CODE	USABLE ON CODE	INC		
NO	NO						IN	UNIT	
8	37	PAOZZ	5310-00-926-1835	96906 MS21083C3	NUT, SELF LOCKING	EA	1		
8	38	XBOZZ		97403 13221E4542	SPACER, EVAPORATOR	EA	2		
8	39	PAFZZ	4130-01-174-4064	97403 13225E8600	COMPRESSOR	EA	3		
8	40	XBOZZ		97403 13221E4566	RETAINER, INSULATION	EA	1		

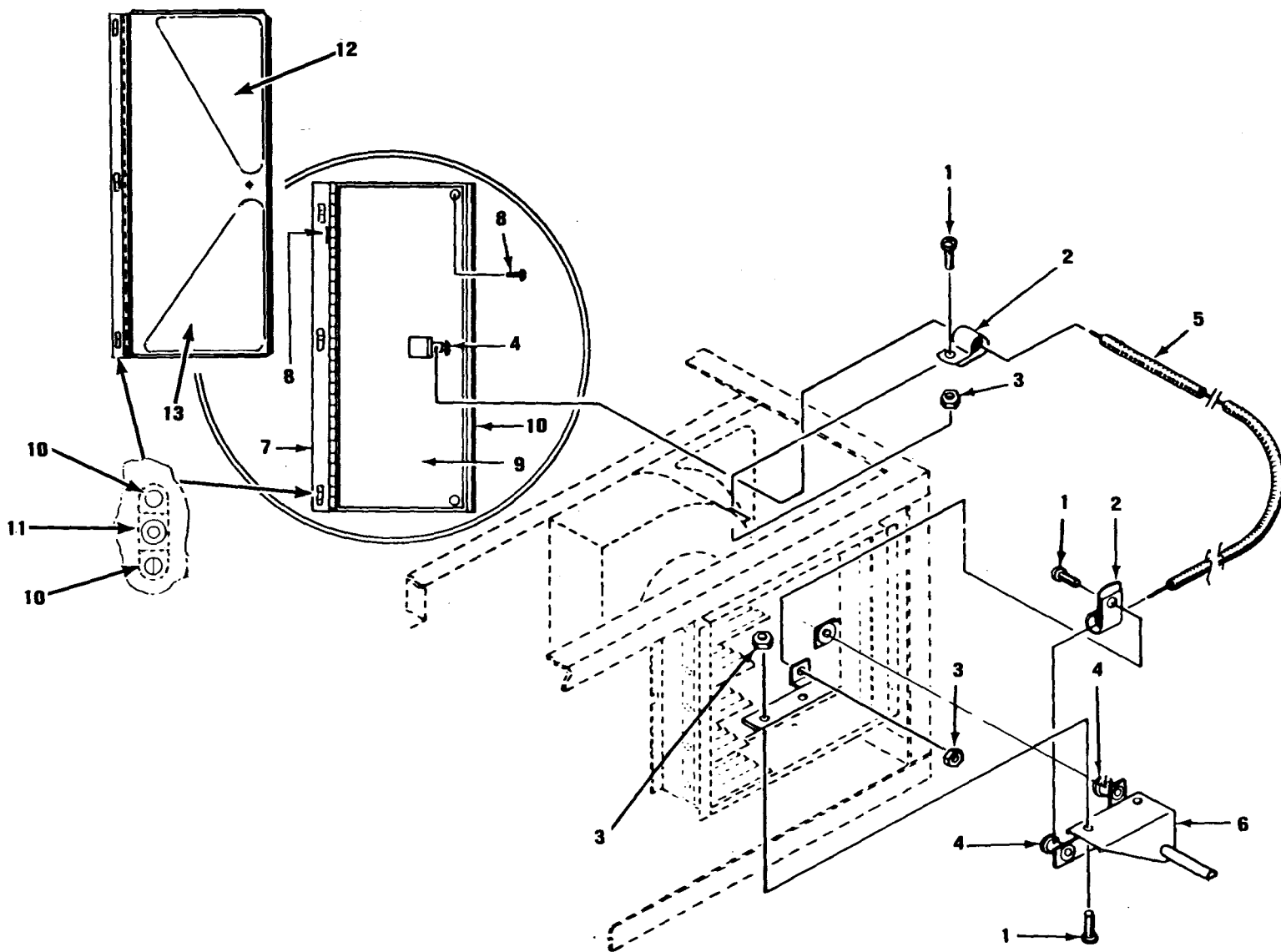


Figure 9. Actuator

(1)	(2)	(3)	(5)	(7)	SECTION		
ILLUSTRATION					QTY		
(a)	(b)	NATIONAL			INC		
FIG	ITEM	STOCK	FSCM	PART	IN		
NO	NO	NUMBER		NUMBER	UNIT		
				USABLE ON CODE			
				U/M			
				USABLE ON CODE			
9	1	PAOZZ 5305-00-054-6668	96906	MS51957-43	SCREW,MACHINE	EA	4
9	2	PAOZZ 5340-00-052-9552	96906	MS21919DG3	CLAMP,LOOP	EA	2
9	3	PAOZZ 5310-00-939-0850	96906	MS21083C08	NUT,SELF-LOCKING	EA	4
9	4	PAOZZ 5340-00-923-8544	70436	FT191	POST,ELECTRICAL-MECHANICAL	EA	4
9	5	XBOZZ	97403	13216E6108-5	CONTROL ASSY	EA	1
9	6	XBOZZ	97403	13221E4570	VENT LINKAGE ASSY	EA	1
9	7	PAOZZ 5340-01-054-4935	96906	MS35822-10A	HINGE,BUTT	EA	1
9	8	PAOZZ 5305-00-054-6652	96906	MS51957-28	SCREW,MACHINE	EA	4
9	9	XBOZZ	97403	13221E4559	DOOR	EA	1
9	10	PAOZZ 5320-00-825-1927	96906	MS20605B3W4	RIVET,BLIND	EA	6
9	11	PAOZZ 5310-00-771-7396	96906	MS21076-L06	NUT,SELFLOCKING,PL	EA	3
9	12	PAOZZ	97403	13221E4557	SEAL,UPPER	EA	1
9	13	PAOZZ	97403	13221E4558	SEAL,LOWER	EA	1

(1)		(2)	(3)	(5)		DESCRIPTION	(7)	SECTION
ILLUSTRATION			NATIONAL	FSCM	PART		U/M	QTY
(a)	(b)	SMR	STOCK		NUMBER	USABLE ON CODE	USABLE ON CODE	INC
FIG	ITEM	NO	NUMBER					IN
NO	NO	CODE						UNIT
GROUP 07 BULK MATERIALS								
BULK		PAFZZ	4710-00-203-3173	81346	ASTM-B280 X.250	TUBE,CAPPER .250 OD X .030 WALL THK		FT
BULK		PAFZZ	4710-00-424-2694	81348	WWT775 X.500	TUBE,METALLIC		FT
BULK		PAOZZ	5330-00-196-8803	81349	MIL-G-20241	FELT SHEET		RO
BULK		PAOZZ	8305-00-196-8816	81349	MIL-G-20241	CLOTH,FELT 500 WIDE X 9.38 LONG		EA
BULK		PAOZZ	5330-00-196-8817	81349	MIL-G-20241	FELT SHEET		RO
BULK		PAOZZ	5330-00-196-8818	81349	MIL-G-20241	FELT SHEET 5 WIDE X 15.25 LONG		RO
BULK		PAOZZ	5640-00-785-7888	81349	MIL-I-14511X.625	INSULATION,SHEET		SH
BULK		PAOZZ	5640-00-031-1262	81349	MIL-I-14511X.500	INSULATION,SHEET		SH
BULK		PAOZZ	8305-00-111-0236	81349	MIL-G-20241	FELT SHEET		RO

NATIONAL STOCK NUMBER AND PART NUMBER INDEX

STOCK NUMBER	FIGURE NO.	ITEM NO.	STOCK NUMBER	FIGURE NO.	ITEM NO.
5340-00-052-9552	9	2	5310-00-728-3469	8	4
5305-00-054-6651	4	8	5310-00-728-3469	8	25
5305-00-054-6651	8	7	5310-00-728-5502	8	2
5305-00-054-6652	2	7	6685-00-758-5244	8	31
5305-00-054-6652	9	8	5310-00-765-3197	4	2
5305-00-054-6653	4	13	5310-00-771-7361	4	20
5305-00-054-6668	6	21	5310-00-771-7396	4	19
5305-00-054-6668	8	15	5310-00-771-7396	9	11
5305-00-054-6669	4	3	5310-00-778-9511	4	24
5305-00-054-6669	4	12	5640-00-785-7888	BULK	
5305-00-054-6669	8	30	4730-00-821-9184	8	9
5305-00-054-6670	1	2	5320-00-825-1927	4	18
5305-00-054-6670	2	4	5320-00-825-1927	9	10
5305-00-054-6670	6	24	5320-00-838-7852	1	18
5305-00-054-6671	1	14	5320-00-838-7852	2	8
5305-00-054-6672	2	1	5320-00-838-7852	8	3
5305-00-054-6672	6	18	5320-00-838-7852	8	24
5310-00-059-9264	8	33	5305-00-841-7424	6	23
5310-00-080-6004	8	28	5355-00-842-3111	6	12
4130-00-081-5399	8	17	5340-00-923-8544	9	4
8503-00-111-0236	BULK		5310-00-925-9646	6	27
5940-00-143-4774	6	5	5310-00-926-1835	8	37
5940-00-143-4775	7	2	5305-00-939-0795	6	6
4730-00-189-2737	8	8	5310-00-939-0850	6	16
4730-00-189-2739	8	21	5310-00-939-0850	8	13
5330-00-196-8803	1	17	5310-00-939-0850	9	3
5330-00-196-8803	BULK		5320-00-957-2499	1	6
8305-00-196-8816	BULK		5305-00-958-5474	6	10
5330-00-196-8817	BULK		5325-00-960-2410	8	19
5330-00-196-8818	BULK		5310-00-982-4988	5	5
4710-00-203-3171	BULK		5310-00-982-6814	6	26
5310-00-241-6640	8	29	5305-00-984-7341	4	1
4730-00-257-2163	8	10	5305-00-984-7351	8	22
5305-00-267-8973	5	1	6145-00-997-7051	6	8
5305-00-269-2809	8	27	4820-01-015-6690	8	5
5975-00-273-0788	6	9	9320-01-020-3543	3	2
4730-00-289-0365	8	36	9320-01-020-3543	6	3
5340-00-291-5323	8	14	5935-01-023-9777	6	7
5930-00-338-8589	6	14	5340-01-024-6617	8	35
4710-00-424-2694	BULK		5640-01-031-1262	BULK	
5975-00-451-5001	6	1	5320-01-049-9232	4	16
5910-00-463-3149	6	19	5340-01-054-4935	9	7
4830-00-472-2641	8	34	4140-01-066-9502	4	7
6145-00-578-7521	7	4	4140-01-066-9503	4	9
5640-00-580-6276	8	16	4130-01-071-5466	3	1
5930-00-617-3585	6	15	6105-01-072-5722	5	3
5310-00-726-9076	2	10	5910-01-073-5744	6	20
5340-00-726-9316	6	22	5950-01-080-1590	8	20
5340-00-726-9316	8	18	4730-01-092-3835	8	6
5310-00-728-3469	1	19	5945-01-097-1751	6	4
5310-00-728-3469	2	9	4130-01-174-4064	8	39
5310-00-728-3469	4	27	5430-01-312-6110	2	2

FSCM	PART NUMBER	FIGURE NO.	ITEM NO.	FSCM	PART NUMBER	FIGURE NO.	ITEM NO.
70255	ADK052	8	17	81349	MIL-G-20241	BULK	
81348	ASTM D2000	3	2	82349	MIL-G-20241	BULK	
81346	ASTM-B280.2500DX.030 WALL STK	BULK		81349	MIL-G-20241	BULK	
81346	ASTM-D2000	6	3	81349	MIL-I-14511X.500	BULK	
41947	A15966	8	31	81349	MIL-I-14511X.625	BULK	
9023	ETW460-125	6	19	81349	MIL03432 1/14R	6	7
70436	FT191	9	4	96906	MS16228-6C	8	29
81349	MIL-G-20241	BULK		96906	MS20604B4W2	1	6
81349	MIL-G-20241	BULK		96906	MS20605B3W2	1	18
81349	MIL-G-20241	BULK		96906	MS20605B3W2	2	8
81349	MIL-G-20241	BULK					

SECTION IV

NATIONAL STOCK NUMBER AND PART NUMBER INDEX

PART NUMBER	FSCM	FIGURE NO.	ITEM NO.	PART NUMBER	FSCM	FIGURE NO.	ITEM NO.
96906	MS20605B3W2	8	3	81348	RR-W-365TYPEII20X20.7WX14.64		6
96906	MS20605B3W2	8	24	97450	R612-77-63045	1	7
96906	MS20605B3W4	4	18	81343	SAE-J513	86	36
96906	MS20605B3W4	9	10	81343	SAE-J516	8	12
96906	MS21044C08	6	25	28520	SR6P1	6	9
96906	MS21045C4	5	5	81348	W-C-596/13-2	6	7
96906	MS21045C6	8	33	81348	WWT775		BULK
96906	MS21076-L06	4	19	41947	W40350	8	9
96906	MS21076-L06	9	11	97403	13216E6108-5	9	5
96906	MS21076L08	4	20	97403	13219E9499	8	5
96906	MS21077-06	2	10	97403	13219E9540	8	6
96906	MS21077-08	1	19	97403	13220E8465	6	2
96906	MS21077-08	2	9	97403	13221E4530	1	4
96906	MS21077-08	8	4	97403	13221E4531	1	3
96906	MS21077-08	8	25	97403	13221E4532	1	1
96906	MS21077-3	8	2	97403	13221E4533	3	1
96906	MS21083C06	6	27	97403	13221E4534	8	1
96906	MS21083C08	6	16	97403	13221E4535	8	20
96906	MS21083C08	8	13	97403	13221E4536	1	13
96906	MS21083C08	9	3	97403	13221E4537	1	12
96906	MS21083C3	8	37	97403	13221E4538	8	32
96906	MS21266-IN	8	19	97403	13221E4539	5	4
96906	MS21919DG3	9	2	97403	13221E4540	1	20
96906	MS21919D12	8	35	97403	13221E4541	1	10
96906	MS21919D8	6	22	97403	13221E4542	8	38
96906	MS21919D8	8	18	97403	13221E4543	8	26
96906	MS21919WDG4	8	14	97403	13221E4544	8	23
96906	MS24662-203	4	17	97403	13221E4545	4	4
96906	MS25036-153	6	4	97403	13221E4546	4	22
96906	MS25036-156	7	2	97403	13221E4547	4	10
96906	MS27183-14	8	28	97403	13221E4549	6	14
96906	MS27183-41	4	2	97403	13221E4550	4	15
96906	MS3367-3-9	6	1	97403	13221E4552	1	8
96906	MS35190-250	6	10	97403	13221E4553	4	9
96906	MS35191-273	8	34	97403	13221E4554	6	15
96906	MS35191-275	8	22	97403	13221E4555	4	5
96906	MS35218-26	6	6	97403	13221E4557	9	12
96906	MS35822-10A	9	7	97403	13221E4558	9	13
96906	MS35872-2	8	8	97403	13221E4559	9	9
96906	MS35872-3	8	1	97403	13221E4560	4	17
96906	MS35929-2	8	10	97403	13221E4561	4	21
96906	MS51957-27	4	8	97403	13221E4562	1	5
96906	MS51957-27	8	7	97403	1.32E+09	1	15
96906	MS51957-28	2	7	97403	13221E4564	4	14
96906	MS51957-28	6	17	97403	13221E4566	8	40
96906	MS51957-28	9	8	97403	13221E4567	6	13
96906	MS51957-29	4	13	97403	13221E4568	1	11
96906	MS51957-43	6	21	97403	13221E4569	1	16
96906	MS51957-43	8	15	97403	13221E4570	9	6
96906	MS51957-43	9	1	97403	13221E4574	8	11
96906	MS51957-44	4	3	97403	13221E4575	4	7
96906	MS51957-44	4	11	97403	13221E4576	2	5
96906	MS51957-44	8	30	97403	13221E4577	2	3
96906	MS51957-45	1	2	97403	13221E4578	2	2
96906	MS51957-45	6	24	97403	13221E4582	6	4
96906	MS51957-46	1	14	97403	13221E4583	5	3
96906	MS51957-47	2	1	97403	13221E4584	1	9
96906	MS51957-47	6	18	97403	13221E4585-1	7	1
96906	MS51957-55	6	23	97403	13222E5746	4	12
96906	MS90726-4	5	1	97403	13222E5747	6	25
96906	MS90726-66	8	27	97403	13225E8600	8	39
96906	MS91528-1A2B	6	12	77464	165	8	16
81349	M5086/1-12-9	7	4	1002	21L3007	6	20
90201	CPN370	5	2	779	61108-1	7	3

By Order of the Secretary of the Army:

E. C. MEYER
General, United States Army
Chief of Staff

Official:

ROBERT M. JOYCE
Major General, United States Army
The Adjutant General

DISTRIBUTION :

To be distributed in accordance with DA Form 12-25C, Environmental Equipment, Air Conditioners, 9000 BTU

★ U.S. GOVERNMENT PRINTING OFFICE: 1982-564029/1347

RECOMMENDED CHANGES TO EQUIPMENT TECHNICAL PUBLICATIONS



THEN... JOT DOWN THE DOPE ABOUT IT ON THIS FORM. CAREFULLY TEAR IT OUT, FOLD IT AND DROP IT IN THE MAIL!

SOMETHING WRONG WITH THIS PUBLICATION?

FROM: (PRINT YOUR UNIT'S COMPLETE ADDRESS)

PFC JOHN DOE
COA, 3d ENGINEER BN
FT. LEANORWOOD, MD 63108

DATE SENT

PUBLICATION NUMBER

TM 5-4120-341-23P

PUBLICATION DATE

8 Oct 82

PUBLICATION TITLE

Air Conditioner, Floor Mounted,
Air Cooled Electric Motor Driven

BE EXACT... PIN-POINT WHERE IT IS

PAGE NO.	PARA-GRAPH	FIGURE NO.	TABLE NO.
6	2-1 a		
B1		4-3	
125	line 20		

IN THIS SPACE TELL WHAT IS WRONG AND WHAT SHOULD BE DONE ABOUT IT:

In line 6 of paragraph 2-1a the manual states the engine has 6 cylinders. The engine on my set only has 4 cylinders. Change the manual to show 4 cylinders.

Callout 16 on figure 4-3 is pointing at a bolt. In key to figure 4-3, item 16 is called a shim - Please correct one or the other.

I ordered a gasket, item 19 on figure B-16 by NSN 2 910-00-762-3001. I got a gasket but it doesn't fit. Supply says I got what I ordered, so the NSN is wrong. Please give me a good NSN

PRINTED NAME, GRADE OR TITLE, AND TELEPHONE NUMBER

JOHN DOE, PFC (268) 317-7111

SIGN HERE:

JOHN DOE

DA FORM 2028-2
1 JUL 79

PREVIOUS EDITIONS ARE OBSOLETE.
DRSTS-M Overprint 1, 1 Nov 80

P.S.--IF YOUR OUTFIT WANTS TO KNOW ABOUT YOUR RECOMMENDATION MAKE A CARBON COPY OF THIS AND GIVE IT TO YOUR HEADQUARTERS.

TEAR ALONG PERFORATED LINE

FILL IN YOUR
UNIT'S ADDRESS

FOLD BACK

DEPARTMENT OF THE ARMY

OFFICIAL BUSINESS
PENALTY FOR PRIVATE USE \$300

POSTAGE AND FEES PAID
DEPARTMENT OF THE ARMY
DOD 314



TEAR ALONG PERFORATED LINE

COMMANDER
U S ARMY SUPPORT AND AVIATION MATERIEL READINESS COMMAND
ATTN: DRSTS-MPSD
4300 GOODFELLOW BOULEVARD
ST. LOUIS, MO 63120

RECOMMENDED CHANGES TO EQUIPMENT TECHNICAL PUBLICATIONS



THEN... JOT DOWN THE DOPE ABOUT IT ON THIS FORM. CAREFULLY TEAR IT OUT. FOLD IT AND DROP IT IN THE MAIL!

SOMETHING WRONG WITH THIS PUBLICATION?

FROM: (PRINT YOUR UNIT'S COMPLETE ADDRESS)

DATE SENT

PUBLICATION NUMBER

TM 5-4120-341-23P

PUBLICATION DATE

8 Oct 82

PUBLICATION TITLE

Air Conditioner, Floor Mounted
Air Cooled Electric Motor Driven

BE EXACT... PIN-POINT WHERE IT IS

PAGE NO.

PARA-GRAPH

FIGURE NO.

TABLE NO.

IN THIS SPACE TELL WHAT IS WRONG AND WHAT SHOULD BE DONE ABOUT IT:

TEAR ALONG PERFORATED LINE

PRINTED NAME, GRADE OR TITLE, AND TELEPHONE NUMBER

SIGN HERE:

DA FORM 2028-2
1 JUL 79

PREVIOUS EDITIONS ARE OBSOLETE.
DRSTS-M Overprint 2, 1 Nov 80.

P.S.--IF YOUR OUTFIT WANTS TO KNOW ABOUT YOUR RECOMMENDATION MAKE A CARBON COPY OF THIS AND GIVE IT TO YOUR HEADQUARTERS.

FILL IN YOUR
UNIT'S ADDRESS

FOLD BACK

DEPARTMENT OF THE ARMY

OFFICIAL BUSINESS
PENALTY FOR PRIVATE USE \$300

POSTAGE AND FEES PAID
DEPARTMENT OF THE ARMY
DOD 314



TEAR ALONG PERFORATED LINE

COMMANDER
U S ARMY SUPPORT AND AVIATION MATERIEL READINESS COMMAND
ATTN: DRSTS-MPSD
4300 GOODFELLOW BOULEVARD
ST. LOUIS, MO 63120

RECOMMENDED CHANGES TO EQUIPMENT TECHNICAL PUBLICATIONS



THEN... JOT DOWN THE DOPE ABOUT IT ON THIS FORM. CAREFULLY TEAR IT OUT. FOLD IT AND DROP IT IN THE MAIL!

SOMETHING WRONG WITH THIS PUBLICATION?

FROM: (PRINT YOUR UNIT'S COMPLETE ADDRESS)

DATE SENT

PUBLICATION NUMBER
TM 5-4120-341-23P

PUBLICATION DATE
8 Oct 82

PUBLICATION TITLE
Air Conditioner, Floor Mounted
Air Cooled Electric Motor Driven

BE EXACT... PIN-POINT WHERE IT IS

PAGE NO.	PARA-GRAPH	FIGURE NO.	TABLE NO.
----------	------------	------------	-----------

IN THIS SPACE TELL WHAT IS WRONG AND WHAT SHOULD BE DONE ABOUT IT:

TEAR ALONG PERFORATED LINE

PRINTED NAME, GRADE OR TITLE, AND TELEPHONE NUMBER

SIGN HERE:

FILL IN YOUR
UNIT'S ADDRESS

FOLD BACK

DEPARTMENT OF THE ARMY

OFFICIAL BUSINESS
PENALTY FOR PRIVATE USE \$300

POSTAGE AND FEES PAID
DEPARTMENT OF THE ARMY
DOD 314



TEAR ALONG PERFORATED LINE

COMMANDER
U S ARMY SUPPORT AND AVIATION MATERIEL READINESS COMMAND
ATTN: DRSTS-MPSD
4300 GOODFELLOW BOULEVARD
ST. LOUIS, MO 63120

RECOMMENDED CHANGES TO EQUIPMENT TECHNICAL PUBLICATIONS



THEN... JOT DOWN THE DOPE ABOUT IT ON THIS FORM. CAREFULLY TEAR IT OUT, FOLD IT AND DROP IT IN THE MAIL!

SOMETHING WRONG WITH THIS PUBLICATION?

FROM: (PRINT YOUR UNIT'S COMPLETE ADDRESS)

DATE SENT

PUBLICATION NUMBER

TM 5-4120-341-23P

PUBLICATION DATE

8 Oct 82

PUBLICATION TITLE

Air Conditioner, Floor Mounted
Air Cooled Electric Motor Driven

BE EXACT... PIN-POINT WHERE IT IS

PAGE NO	PARA-GRAPH	FIGURE NO.	TABLE NO.

IN THIS SPACE TELL WHAT IS WRONG AND WHAT SHOULD BE DONE ABOUT IT:

(This area is currently blank for user input.)

PRINTED NAME, GRADE OR TITLE, AND TELEPHONE NUMBER

SIGN HERE:

DA FORM 2028-2
1 JUL 79

PREVIOUS EDITIONS ARE OBSOLETE.
DRSTS-M Overprint 2, 1 Nov 80.

P.S.--IF YOUR OUTFIT WANTS TO KNOW ABOUT YOUR RECOMMENDATION MAKE A CARBON COPY OF THIS AND GIVE IT TO YOUR HEADQUARTERS.

TEAR ALONG PERFORATED LINE

FILL IN YOUR
UNIT'S ADDRESS

FOLD BACK

DEPARTMENT OF THE ARMY

OFFICIAL BUSINESS
PENALTY FOR PRIVATE USE \$300

POSTAGE AND FEES PAID
DEPARTMENT OF THE ARMY
DOD 314



TEAR ALONG PERFORATED LINE

COMMANDER
U S ARMY SUPPORT AND AVIATION MATERIEL READINESS COMMAND
ATTN: DRSTS-MPSD
4300 GOODFELLOW BOULEVARD
ST. LOUIS, MO 63120

The Metric System and Equivalents

Linear Measure

1 centimeter = 10 millimeters = .39 inch
 1 decimeter = 10 centimeters = 3.94 inches
 1 meter = 10 decimeters = 39.37 inches
 1 dekameter = 10 meters = 32.8 feet
 1 hectometer = 10 dekameters = 328.08 feet
 1 kilometer = 10 hectometers = 3,280.8 feet

Weights

1 centigram = 10 milligrams = .15 grain
 1 decigram = 10 centigrams = 1.54 grains
 1 gram = 10 decigrams = .035 ounce
 1 dekagram = 10 grams = .35 ounce
 1 hectogram = 10 dekagrams = 3.52 ounces
 1 kilogram = 10 hectograms = 2.2 pounds
 1 quintal = 100 kilograms = 220.46 pounds
 1 metric ton = 10 quintals = 1.1 short tons

Liquid Measure

1 centiliter = 10 milliliters = .34 fl. ounce
 1 deciliter = 10 centiliters = 3.38 fl. ounces
 1 liter = 10 deciliters = 33.81 fl. ounces
 1 dekaliter = 10 liters = 2.64 gallons
 1 hectoliter = 10 dekaliters = 26.42 gallons
 1 kiloliter = 10 hectoliters = 264.18 gallons

Square Measure

1 sq. centimeter = 100 sq. millimeters = .155 sq. inch
 1 sq. decimeter = 100 sq. centimeters = 15.5 sq. inches
 1 sq. meter (centare) = 100 sq. decimeters = 10.76 sq. feet
 1 sq. dekameter (are) = 100 sq. meters = 1,076.4 sq. feet
 1 sq. hectometer (hectare) = 100 sq. dekameters = 2.47 acres
 1 sq. kilometer = 100 sq. hectometers = .386 sq. mile

Cubic Measure

1 cu. centimeter = 1000 cu. millimeters = .06 cu. inch
 1 cu. decimeter = 1000 cu. centimeters = 61.02 cu. inches
 1 cu. meter = 1000 cu. decimeters = 35.31 cu. feet

Approximate Conversion Factors

To change	To	Multiply by	To change	To	Multiply by
inches	centimeters	2.540	ounce-inches	newton-meters	.007062
feet	meters	.305	centimeters	inches	.394
yards	meters	.914	meters	feet	3.280
miles	kilometers	1.609	meters	yards	1.094
square inches	square centimeters	6.451	kilometers	miles	.621
square feet	square meters	.093	square centimeters	square inches	.155
square yards	square meters	.836	square meters	square feet	10.764
square miles	square kilometers	2.590	square meters	square yards	1.196
acres	square hectometers	.405	square kilometers	square miles	.386
cubic feet	cubic meters	.028	square hectometers	acres	2.471
cubic yards	cubic meters	.765	cubic meters	cubic feet	35.315
fluid ounces	milliliters	29.573	cubic meters	cubic yards	1.308
pints	liters	.473	milliliters	fluid ounces	.034
quarts	liters	.946	liters	pints	2.113
gallons	liters	3.785	liters	quarts	1.057
ounces	grams	28.349	liters	gallons	.264
pounds	kilograms	.454	grams	ounces	.035
short tons	metric tons	.907	kilograms	pounds	2.205
pound-feet	newton-meters	1.356	metric tons	short tons	1.102
pound-inches	newton-meters	.11296			

Temperature (Exact)

°F Fahrenheit temperature 5/9 (after subtracting 32) Celsius temperature °C

